

VISIBLE SPECTROSCOPIC METHOD FOR ESTIMATION OF AMLODIPINE BESYLATE IN TABLETS

Praveen Kumar Jampana^{1*}, BH. Rajesh Varma², G. Raveendra Babu³,
P. Sri Lakshmi Surekha³, T. Kala Praveen³ and P. Sambhasiva Rao⁴

¹Laurus Labs Private Limited, Hyderabad, Andhra Pradesh, India

²Syngene International Limited, Bangalore, Karnataka, India.

³D.C.R.M.Pharmacy.College, Inkollu, Andhra Pradesh, India.

⁴Vijaya College Pharmacy, Hayathnagar, Hyderabad, Andhra Pradesh, India.

ABSTRACT

A simple, sensitive, specific, and validated Visible method has been developed for the quantitative determination of Amlodipine besylate in pure and tablet dosage form. The λ_{max} was found to be 456nm for assay. The linearity was found in concentration range of 3-30 $\mu\text{g/ml}$. The correlation coefficient was found 0.999. The regression equation was found as $Y=0.0222C + 0.0034Y$. The method was validated for linearity, accuracy, precision and ruggedness. The LOD and LOQ for estimation of Amlodipine besylate were found as 0.104, 0.322 respectively. Recovery of Amlodipine besylate was found to be 99.90%.

Keywords: Amlodipine besylate, Visible Spectrophotometry, Validation, Beer's law.

INTRODUCTION

Amlodipine besylate is chemically 3-Ethyl 5-methyl (4RS)-2-[(2-aminoethoxy methyl)-4-(2-chlorophenyl)-6-methyl-1,4-dihydropyridine-3,5-dicarboxylate benzene sulphonate. Amlodipine is used in the management of hypertension¹ and coronary artery disease². It is available in several officials in Pharmacopoeia³⁻⁵. Literature survey reveals that, Spectrophotometric methods⁶⁻²⁰, HPLC²¹⁻²³, HPTLC²⁴, UPLC²⁵. In the present study, an attempt has been made to develop UV Spectrophotometric method for the determination of Amlodipine besylate in bulk and marketed formulations using 0.01% O-phosphoric acid. The developed method was found to be simple, sensitive and reproducible.

MATERIALS AND METHODS

Instrumentation

The present work was carried out on ElicoSL164 UV- Visible spectrophotometer having double beam detector configuration. The absorption spectra of reference and test solution were carried out in a 1 cm quartz cell over the range of 200-800 nm.

Chemicals

All chemicals of analytical grade used as it is.

Preparation of standard solution

Standard stock solution was prepared by dissolving accurately weighed 100 mg of amlodipine besylate in Dimethyl sulphoxide and the volume was made up to 100 ml with Dimethyl sulphoxide. (Stock solution-I, 1000 mcg/ml). 10 ml of stock solution-I was diluted to 100 ml with dimethyl sulphoxide. (Stock solution-II, 100 mcg/ml). 1.5 ml of stock solution-II was transferred to a 10ml volumetric flask. To the flask 1ml of 5% w/v Potassium Hydroxide was added and the final volume was diluted to 10 ml with dimethyl sulphoxide, so that to produce the concentration 10 mcg/ml. The absorbance of yellow chromogen obtained was measured against respective blank solution in the visible region of 400-600 nm, which shows maximum absorbance at 456 nm.

Preparation of sample solutions

20 tablets of one brand of amlodipine besylate was took, and all the tablets were crushed to fine powder by using pestle and mortar. Powder equivalent to 25 mg of amlodipine besylate was

weighed accurately and transferred into a 25 ml standard volumetric flask. The contents were dissolved in Dimethyl sulphoxide and sonicated for five minutes. This solution was filtered through 0.45 μ m whatsmann filter paper. 5 ml of the filtrate was diluted to 50 ml with dimethyl sulphoxide to get the solution of 100 mcg/ml. An aliquot of 1.5 ml of test solution was transferred to a 10ml volumetric flask. To the flask 1ml of 5% w/v Potassium Hydroxide was added and the final volume was diluted to 10 ml with dimethyl sulphoxide, so that to produce the concentration 10 mcg/ml. The absorbance of yellow chromogen obtained was measured against respective blank solution in the Visible region of 400-600 nm, which shows maximum absorbance at 456 nm.

PROCEDURE

Aliquots of standard solution of amlodipine besylate ranging from 0.5-2.5 ml (1 ml = 100 mcg) were transferred into a series of 10 ml volumetric flasks. The volume in each flask was made up to 10 ml with distilled water and the absorbances were measured at 456 nm against solvent blank. The obtained absorbance values when plotted against the concentration of amlodipine besylate give the calibration graph.

VALIDATION

Validation of the developed method was done according to ICH guidelines²⁶.

Linearity

The linearity of the method was demonstrated over the concentration range of 3-30 mcg/ml of the target concentration. Accurately weighed 100 mg of pure drug was taken in clean, dry 100 ml volumetric flask and dissolved in small volume of Dimethyl sulphoxide and made up the volume to 100 ml with Dimethyl sulphoxide. This gave 1000 mcg/ml of drug concentration (Stock solution-I). From this 10 ml of solution was pipetted out into 100 ml volumetric flask and volume was made upto the mark with dimethyl sulphoxide (Stock solution-II, 100 mcg/ml). Concentrations of 3, 6, 9, 12, 15, 18, 21, 24, 27 and 30 mcg/ml were prepared from above prepared Stock solution-II, calibration curve was plotted and the correlation coefficient was calculated.

Precision

Correlation coefficient of the linearity were found for method and reported in Table No.1 The precision of an analytical method is the degree of agreement among individual test results when the method is applied repeatedly to multiple samplings of

homogenous samples. It provides an indication of random error results and was expressed as coefficient of variation (CV).

Intra and inter-day precision

A variation of results within the same day (intra-day), variation of results between days (inter-day) was analyzed. Intra-day precision was determined by analyzing amlodipine besylate for five times in the same day at 456 nm. Inter-day precision was determined by analyzing the drug daily once for five days at 456 nm.

Accuracy

Accuracy is the closeness of the test results obtained by the method to the true value. The recovery technique was performed to judge the accuracy of the proposed method. For this, known quantities of the amlodipine besylate solution were mixed with definite amounts of pre-analyzed formulations and the mixtures were analyzed. The total amount of amlodipine besylate was determined by using the proposed method and the amount of added drug was calculated by the difference.

Ruggedness and Robustness

The solutions were prepared and analyzed with change in the analytical conditions like different laboratory conditions and different analysts.

RESULT AND DISCUSSIONS

The optimum conditions for Visible spectroscopy method has been established by varying the parameters one at a time and keeping the other parameters fixed and observing the effects of products on the absorbance of the sample and colored species. Beer's law limits, molar absorptivity, Sandal's sensitivity, %range of error and % relative standard deviation are summarized in Table 1. The regression analysis using the method of least squares was made for the slope (b), intercept(a) and correlation coefficient(r) obtained from different concentrations are given in Table 1. The results showed that the method have reasonable precision. To evaluate the validity and reproducibility of the methods, known amounts of pure drug were added to the previously analyzed pharmaceutical dosage forms and the mixtures were analyzed by the proposed methods. The percentage recoveries are given in Table.3. The interference studies veiled that the common excipients and other additives that are usually present in the injection dosage forms did not interfere at their regularly added levels.

CONCLUSIONS

From the results the method described in this paper for the determination of Amlodipine besylate from tablet formulation is simple, accurate, sensitive and reproducible. The proposed method could be applied for routine analysis in quality control laboratories.

ACKNOWLEDGEMENTS

The authors are thankful to management of Sir I.P.V.V.A.S educational society for providing laboratory facilities.

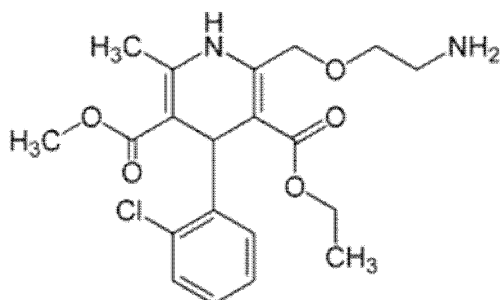


Fig. 1: Structure of Amlodipine besylate

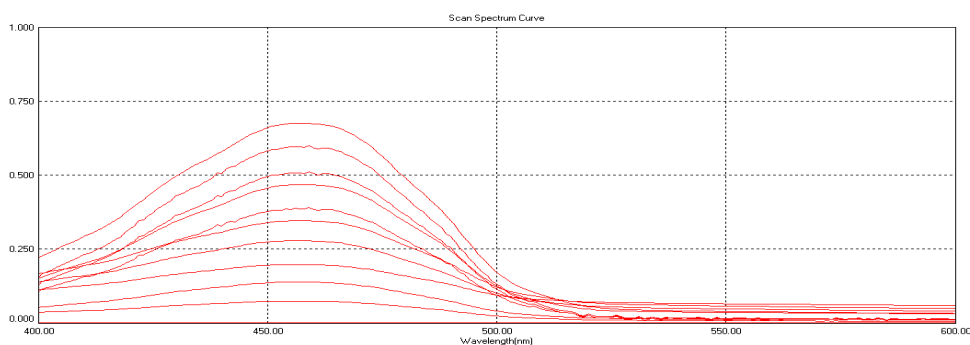


Fig. 2: Overlay spectrum of Amlodipine besylate in Dimethyl sulphoxide and 5%w/v Potassium hydroxide (3-30mcg/ml)

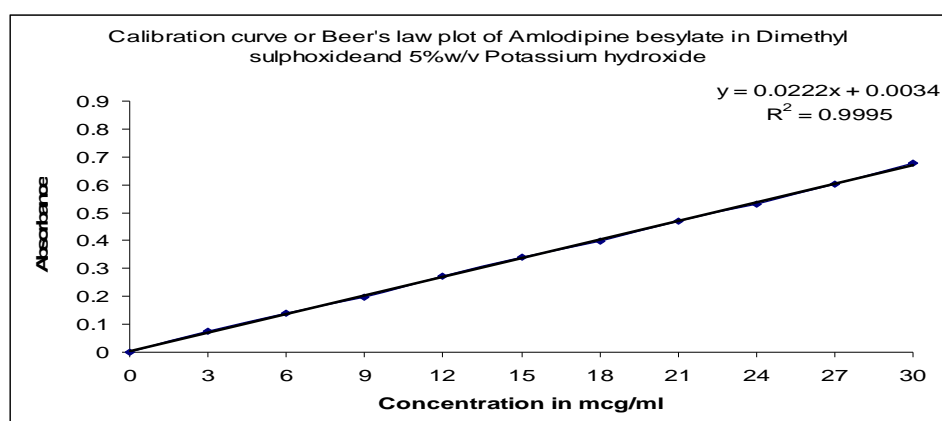


Fig. 3: Calibration curve of Amlodipine besylate in Dimethyl sulphoxide and 5%w/v Potassium hydroxide (3-30mcg/ml).

Table 1: Optimum conditions, Optical characteristics and Statistical data of the regression equation in Visible spectrophotometry

Parameter	Visible spectrophotometry
λ_{\max} (nm)	456
Beer's law limits (mcg/ml)	3-30
Molar extinction coefficient ($\text{mol}^{-1}\text{cm}^{-1}$)	0.0068×10^4
Sandell's sensitivity (mcg/cm ² -0.001 absorbance units)	0.0102
Regression equation (Y*)	$Y=0.0222C + 0.0034$
Slope (b)	0.0222
Intercept (a)	0.0034
Correlation coefficient (r^2)	0.9995
% RSD**	0.86
Limit of detection (mcg/ml)	0.104
Limit of quantitation (mcg/ml)	0.322

Table 2: Analysis of formulation

Drug	Amount (mg/tablet)		% label claim	%RSD
	labelled	Found		
Amlodipine	10	9.962	99.62	0.334

Table 3: Recovery Studies

Drug	Labeled clime (mg/Tablet)	Estimated amount (mg/Tablet)	Spike level (%)	Amount of drug added (mg)	Amount of drug recovered (mg)	Percentage recovery \pm SD*
Amlodipine	10	9.962	50	2mg	1.998	99.90 ± 1.09
			100	4mg	3.997	99.93 ± 1.88
			150	6mg	5.968	99.48 ± 0.89

REFERENCES

- Wang JG. A combined role of calcium channel blockers and angiotensin receptor blockers in stroke prevention. *Vascular health and risk management*. 2009;(5):593-605.
- Amlodipine Besylate. The American Society of Health-System Pharmacists. 2011.
- British Pharmacopoeia. London. 2008;137.
- Norvasc. Online Drug Description and Clinical Pharmacology of amlodipine. The Internet Drug Index. 2008.
- European Pharmacopoeia. 981-982.
- Sridhar K, Sastry CSP and Reddy MN. Spectrophotometric determination of amlodipine besylate in pure forms and tablets. *Analytical letters*. 1997;30:121-126.
- Gohil K, Trivedi P and Molvi KI. Spectrophotometric analysis of amlodipine besylate in bulk and in tablet dosage forms. *Indian Journal Pharma Sci*. 2005;67:376-378.
- Raman N and Nasrul Hoda M. Validated spectroscopic method for determination of amlodipine besylate in drug formulation using 2,3-dichloro -5,6 dicyno -1,4 benzoquino and ascorbic acid. *J Pharm Biomed Anal*. 2003;31:381-392.
- Prabhakar AH and Giridhar R. Spectrophotometric method for determination of amlodipine besylate in pure form and in tablet. *Indian Drugs*. 2003;39:204-208.
- Rango G, Garofalo A and Vetuschi C. Photo degradation monitoring of amlodipine by derivative spectroscopy. *J Pharm Biomed Anal*. 2002;27:19-24.
- Khopade SA and Jain NK. Difference spectrophotometric estimation of amlodipine besylate. *Indian Drugs*. 2000;37:351-353.
- Rahman A and Azmi SNH. Spectrophotometric estimation of amlodipine besylate by charge transfer complex formation with p-chloranillic acid. *J Anal Sci*. 2000;16:1353-1356.
- Singh G, Mishra A, Verma A and Mishra A. Development and Validation of UV Spectrophotometric Method for Estimation of Amlodipine Besylate in Tablet Dosage Form. *RJPT*. 2012;(7):931-933.

14. Juya V, Chaudhary M, Kumar P, Gnanarajan G and Yadav PK. Method Development and its Validation for Simultaneous Estimation of Atorvastatin and Amlodipine in Combination in Tablet Dosage Form by UV Spectroscopy, Using in Multi-Component Mode of Analysis. JPR. 2008.
15. Delhiraj N, Basksh A, Parveen A, Muzzamil K and Anbazhagan S. Simultaneous Spectrophotometric Estimation of Olimesartan, Medoxomil, Amlodipine Besylate And Hydrochlorothiazide in Pharmaceutical Dosage Form. JCPS. 2012;30.
16. Baheti KG and Panigrahi S. Simultaneous UV Spectroscopic Estimation of Amlodipine Besylate and Indpamide in Bulk and Tablet Dosage Form. Int J Adv Pharm Biol Scie. 2012;(2):155-164.
17. Seema M, Dinesh R and Madhulika T. Validated UV Spectrophotometric Method for Simultaneous Estimation of Metoprolol Succinate and Amlodipine Besylate in Their Combined Tablet Dosage Form. IJABC. 2013;3(3):82-85.
18. Amin and Nisha P. Simultaneous Estimation of Amlodipine and lisdexamfetamine in Combined Dosage Form Using Derivative Spectrophotometric Method. IJPRBS. 2012;(3):204-219.
19. Priyanka RP, Sachin UR, Pandurang ND and Kishor BB. Simultaneous Estimation of Ramipril and Amlodipine by UV Spectrophotometric Method. Research J Pharm and Tech. 2009;(2).
20. Paramita D, Sandip P, Radhika P, Subramanyam E and Sharbaraya A. Simultaneous Estimation of Aliskiren and Amlodipine in Tablet Dosage form by UV Spectroscopy. Int J Drug Dev and Res. 2012;4(2):265-270.
21. Hamed M, Habib A, Sherin F and Badran I. Development and Validation of Quality by Design Optimised Reversed Phase HPLC Method for Simultaneous Estimation of Telmisartan and Amlodipine. IJBPR. 2013;4(10):697-701.
22. Suhas S, Ashok P, Prasad K and Trinath M. Simultaneous Estimation of Telmisartan & Amlodipine in Bulk and Tablets by UV and RP-HPLC Method. JAPHR. 2011;3.
23. Saurabh KB and Nitin MV. Simultaneous Estimation of Amlodipine and Rosuvastatin in Combined Bulk Forms by RP-HPLC Using Ultraviolet Detection. Bull Pharm Res. 2013;3(1).
24. Dhandapani B, Anjaneyulu N, Venkateshwarlu Y and Rasheed S. HPTLC Method Development and Validation for the Simultaneous Estimation of Amlodipine Besylate and Nebivolol Hydrochloride in tablet dosage form. JPR. 2010;(3):332.
25. Shiva NVPB and Prasad KD. Quantitative Determination of Amlodipine in Human Plasma by Ultra Performance Liquid Chromatography-Electro Spray Ionization Mass Spectrometry Application to a Clinical Pharmacokinetic Study. Asian J Pharm Clin Res. 2012;89-93.
26. Text on Validation of Analytical Procedures Q2 (R1) in, I.C.H. Harmonised Tripartite Guidelines; Nov. 1996.