

IMPACT OF CALCIUM AND MAGNESIUM IONS IN IDENTIFICATION OF OFFSPRING GENDER IN RATS

S. Chandraju^{1*}, A. Beirami¹ and CS. Chidan Kumar²

¹Department of Studies in Sugar Technology, Sir M.Vshweshwaraya Post-Graduate Center, University of Mysore, Tubinakere, Mandya, Karnataka, India.

²Department of Engineering Chemistry, Alva's Institute of Engineering & Technology, Shobhavana Campus, Mijar, Moodbidri, South Canara, Karnataka, India.

ABSTRACT

Impact of calcium and magnesium in diet to determine offspring gender in rats has been investigated. Sex determination has scientific basis for prevention of genetic diseases in addition to social backgrounds. 20 healthy rats chosen from the first generation of the previous experimented rats were divided into two groups in the ratio male to female 1:5. The first group was Ca and Mg, the second group was control unit without Ca and Mg. It was found that the delivered offspring male to female ratio were 3.3:1 and 1:1 for the first and second groups respectively. Also, it was found that rats fed with (Ca, Mg) food yields maximum numbers of male offspring (77), while rats fed with normal food yields lowest numbers of male offspring (50).

Keywords: calcium, diabetes, magnesium, sex ratio, rats, offsprings.

INTRODUCTION

Pregnancy is the fertilization and development of one or more offspring, known as an embryo or fetus, in a woman's uterus. In mammals, pregnancy is defined as the period between implantation of a fertilized egg in wall of the uterus and delivery or other termination. The growth and development of the fetus in gestation is partially determined by the genome of the fetus, which produces its own growth factors as well as the majority of its hormones. However, this genetic influence is highly dependent upon interaction with environmental factors¹.

One environmental factor vital in the growth and development of the fetus is nutrition. A balanced, nutritious diet is an important aspect of a healthy pregnancy. Eating a healthy diet, balancing carbohydrates, fat, and proteins, and eating a variety of fruits and vegetables, usually ensures good nutrition. Those whose diets are affected by health issues, religious requirements, or ethical beliefs

may choose to consult a health professional for specific advice. Adequate periconceptional folic acid intake has been proven to limit fetal neural tube defects, preventing spina bifida, a very serious birth defect. The neural tube develops during the first 28 days of pregnancy, explaining the necessity to guarantee adequate periconceptional folate intake^{2,3}. Foliates are abundant in spinach and are found in green leafy vegetables e.g. salads, beets, broccoli, asparagus, citrus fruits and melons, chickpeas and eggs. In the United States and Canada, most wheat products are fortified with folic acid⁴.

DHA omega-3 is a major structural fatty acid in the brain and retina, and is naturally found in breast milk. It is important for the woman to consume adequate amounts of DHA during pregnancy and while nursing to support her well-being and the health of her infant. Developing infants cannot produce DHA efficiently, and must receive this vital nutrient from the woman through the

placenta during pregnancy and in breast milk after birth⁵.

The fetus is solely dependent on the mother to supply its nutrients. It is also dependent on the placenta, an essential organ in pregnancy, to transfer these nutrients from the maternal system to its own. Thus the fetal nutrition is a reflection of that of the mother's. This interaction exists in a sensitive equilibrium; if disturbed, there are fetal developmental

consequences¹. Preselection of the gender of offspring is a subject that has held man's attention since the beginning of recorded history. Although scientific studies on genes have been conducted recently, sex selection and gender preference have been considered since ancient time. Anaxagoras, a greek scientist was the first person who related the sex of fetus to testis⁶.

There are many Methods of sex selection such as: The consumption of particular foods, the use of various vaginal douches and the timing of intercourse in relation to ovulation, Sperm sorting, Pre-implantation genetic diagnosis (PGD), Selective abortion, Infanticide, Periconceptual methods, postconceptual methods.

There are also methods which use different food combinations and especial diets to maximum the chance of having a baby with specific sex. The old believe is that eating salty, savory foods leads to delivering a male and sodium rich foods to a girl. Some believes that the ratios of the minerals sodium, potassium are important in determination of offspring gender. It was shown that pregnant female house mice maintained on a consistent low-food diet give birth to a lower proportion of males than do control females fed ad libitum⁷.

As a part of our ongoing research, we studied the Role of calcium and magnesium ions in identification of offspring gender in High-sugar mammals^{8,9,10,11}.

In this study, we study the effects of adding bivalent ions (calcium and magnesium) to the drinking water of rats, offspring sexes was investigated.

MATERIALS AND METHODS

20 Adult female Wistar weighting 100-130g (70-80 days old) and still in their reproductive phase were kept under constant conditions of light (12 h light-dark cycle) and humidity, fed with standard laboratory chow ad libitum (Trouw, Gent, Belgium), and had free access to tap water. Before initiation, the rats were allowed to adapt for one week, then weighed. Vaginal wet smears were made to determine the estrous cycle of the rats. On the evening before oestrus, female rats were housed overnight with male rats; the presence of spermatozoa in a vaginal smear the next morning was defined as day one of pregnancy.

The data were entered and analyses by SPSS software using T-test and the p-value less than 0.05 were considered as significant.

RESULTS AND DISCUSSION

It was found that, in the first group mothers (Ca, Mg); all of the 10 rats became pregnant which delivered 98 offspring. Their gender was 23 male (23.46%) and 77 female (76.54%). In the second group, Non (Ca, Mg); all of the 10 rats became pregnant and delivered 100 offspring, their gender was 50 male (50%) and 50 female (50%) (Table-2).

The sex ratio of female to male in the first group of mothers (Ca, Mg) was 3.3:1, While this ratio in the second group, Non (Ca, Mg) was 1:1 respectively (Table-2). The percentage of the female offspring of mothers (Ca, Mg) (76.54%) was higher than the female offspring in control group (50%). As shown in (Fig-2).

The difference in the sex ratio between the first group mothers (Ca, Mg) with control group were statistically significant (Table-2).

The Total No of offspring in the first group mothers (Ca, Mg) 98 was nearly equal to total no of offspring the control group 100 (Fig-3).

Table 1: Estimated Minerals Requirements

Mouse Minerals ** (g/Kg)	Amount diet (Kg)	Human *(mg-ug/day)
Calcium	5.0	1000
Chloride	0.5	750
Magnesium	0.5	2-5
Phosphorus	3.0	700
Sodium	0.5	500
Potassium	2.0	2000
Iron	35.0	8
Manganese	10.0	2-5
Zinc	150.0	10-12
Iodine	150.0	150-150
Molybdenum	150.0	75-250(ug)

**adapted from Nutrient Requirements of Nonhuman Primates.

* Adapted from Lanus Micronutrient information Center , Oregon State Unit.

Table 2: Sex ratio in different groups of rats

Group	Total no of offspring	No. of male offspring	% age of male offspring	No. of female offspring	% age female offspring	Sex ratio
Ca, Mg	98	23	23.46	77	76.54	3.3
Non Ca, Mg	100	50	50	50	50	1

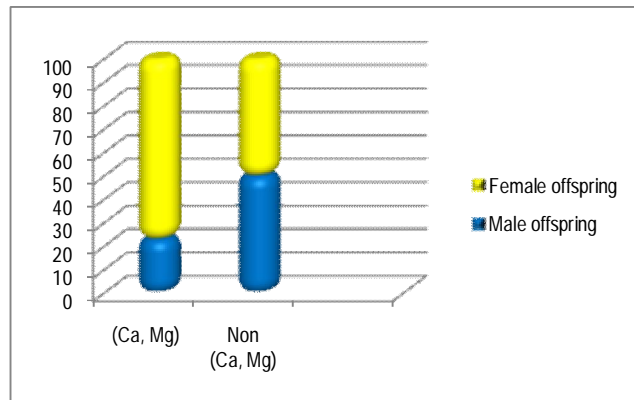


Fig.1: Male and female in different groups of rats

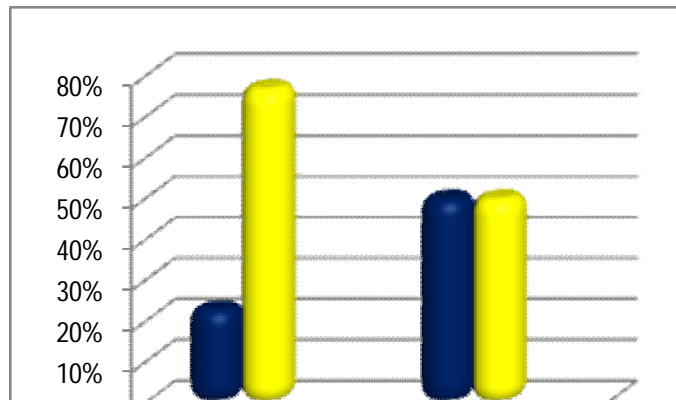


Fig.2: Offspring sex in different groups of rats

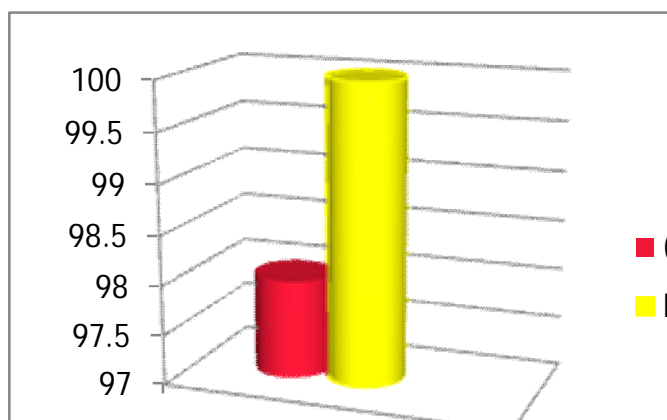


Fig. 3: Number of offspring in different groups of rats

The first medical technique that can be used to select for sex is that of pre-natal diagnosis [PND] and abortion. To utilize this method, the pregnant woman must undergo some sort of prenatal testing, such as an amniocentesis, chorionic villus sampling or an ultrasound, which will allow the doctor to determine the sex of the child, among other things. Once the woman has the information about the child's sex, she can obtain an abortion if the fetus is not of the desired sex. The use of PND and abortion in order to select for sex sounds extreme, and indeed, as Edgar Dahl points out, it is not common for Westerners to utilize such a technique. For example, a follow-up study of 578 patients having prenatal diagnosis at one Melbourne centre found that none of the women had a termination because of the sex of the fetus. Going through the traumatizing experience of an abortion is usually seen as too high a price to pay for a child of a particular sex¹¹.

The second medical technique that can be used to select for sex is that of pre-implantation genetic diagnosis [PGD] with *in vitro* fertilization [IVF]. With this technique, the embryos are screened for sex prior to being implanted into the woman's uterus, thereby eliminating the need to later decide to terminate a pregnancy. PGD and IVF, however, are very invasive and potentially physically harmful, requiring the woman to go through at least one IVF cycle, which includes taking potent drugs to induce super-ovulation, extraction, fertilization and then testing and subsequent implantation of the embryos.

Given the expense of IVF treatment cycles (according to IVF Canada in 2005 it cost \$5,500 for one cycle of IVF, not including drugs¹³.and, according to the same source, the drugs themselves can cost approximately \$3,000 for one cycle¹⁴, it would be highly unlikely that it would be used as a technique for sex selection alone. More likely, it could be used as a sex selection technique for those who are already undergoing IVF for other medical reasons.

The last medical technique that can be used to select for sex is sperm sorting. New technologies allow sperm to be sorted into those carrying X or Y chromosomes with varying degrees of accuracy. To date, the most successful way in which to sort sperm is flow cytometry, which has been branded as the Micro Sort technique¹⁵. Sex selection using flow cytometry results from distinguishing between the identifiable differences between the X and Y chromosomes, as the X chromosome is larger than the Y. The sorted sperm is then used to artificially inseminate the woman. Studies have shown that the Micro Sort technique is more effective in selecting for girls, a success rate of 91%, than for boys, with a success rate of only 76%.¹² Sperm sorting appears, then, to be the least invasive and least expensive (at about \$2,300US per cycle¹³) method of selecting for sex.

There are also methods which use different food combinations and especial diets to maximize the chance of having a baby with specific sex. The old belief is that eating

salty, savory foods leads to delivering a male and sodium rich foods to a female. Some believes that the ratios of the minerals sodium, potassium are important in determination of baby gender. It was shown that pregnant female house mice maintained on a consistent low-food diet give birth to a lower proportion of males than do control females fed ad libitum¹⁶.

CONCLUSION

Today one of good known methods on sex constitution is the preconception diet method. This method claims 80% accuracy and the theory is that by altering your diet to include and exclude certain food, the condition in the reproductive tract will be directly affected; increasing the odds of conceiving a particular sex it is also recommended that both mother and father go on the diet. This is also consistent with the oriental philosophy that everything has a yin or yang quality and the foods supplied in the female diet, female and acid are all yin. The female diet is high in sodium but low in salt and potassium, containing acid forming foods. The diets nutritional content is questionable and contains multiple warnings. The diet may influence the conditions within the reproductive tract and the outer barrier surrounding the ovum. Enabling only one of the two types of sperm to penetrate the depending on which diet is adhered to. Langendon and Proctor first published 'the preconception Gender Diet' based on results reported¹⁷. The theory is that by altering your diet to include and exclude certain foods, the conditions in the reproductive tract will be directly affected, increasing the odds of conceiving a particular sex. This method under scrutiny claims of 80% accuracy based on one clinical trial of only 260 women, the results were published in the international journal of Gynecology and Obstetrics in 1980. The female diet is high in sodium but low in salt and potassium, containing acid forming foods. The diets nutritional content is questionable and contains multiple warnings.

It is recommended to seek the advice of medical practitioner before going on such a restrictive diet, and stay on the diet for no longer than 3 months. The diet may

influence the condition of the cervical mucus and within the reproductive tract and follicular fluid. Enabling only one of the two types of sperm to penetrate the egg depending on which diet is adhered to. The aim of this study was to elevate relationship between minerals and sex ratio in rats.

ACKNOWLEDGEMENT

Authors are grateful to the Dean, Veterinary college of Bangalore, for providing the facilities.

REFERENCES

1. Van Assche F, Holemans K and Aerts I. Long-term consequences for offspring of diabetes during pregnancy. *British Medical Bulletin*. 2001;60:173-182.
2. Klusmann A, Heinrich B, Stöpler H, Gärtner J, Mayatepek E and Von Kries R. A decreasing rate of neural tube defects following the recommendations for periconceptional folic acid supplementation. *Acta Paediatr*. 2005;94:11;1538-42. Doi: 10.1080/08035250500340396. PMID 16303691. Retrieved 2008: 01-20.
3. Stevenson RE, Allen WP, Pai GS, Best R, Seaver LH, Dean J and Thompson S. Decline in prevalence of neural tube defects in a high-risk region of the United States. *Pediatrics* 2000;106:4:677-83. doi:10.1542/peds.106.4.677. PMID 11015508.
4. Centers for Disease Control and Prevention (CDC) "Use of supplements containing folic acid among women of childbearing age—United States, (2008)". *MMWR Morb. Mortal. Wkly. Rep*. 2008;57: 1: 5-8. PMID 18185493.
5. Salem JR. Mechanisms of action of docosahexaenoic acid in the nervous system. *Lipids*. 2001;36:945-59.
6. Mittwoch U. Sex in mythology and history. *Arq Bras Endocrinol Metab*. 2005;49:7-13.
7. Meikle DB and Thornton MW. Premating and gestational effects of maternal nutrition on secondary sex

- ratio in house mice. *J. Reprod Fertil.* 1995;105:193-196.
8. Chandrabu S, Beirami A and Chidan Kumar CS. Role of Sodium and Potassium ions in identification of baby gender in High-sugar mammal's. *International Journal of Pharmacy and Pharmaceutical Sciences*:2011;3(4):303-306.
 9. Chandrabu S, Beirami A and Chidan Kumar CS. Effect of calcium and magnesium ions in identification of baby in High-sugar mammals. *Research in Biotechnology.* 2011;2(3):23-31.
 10. Chandrabu S, Beirami A and Chidan Kumar CS. Effect of Sodium and Potassium ions in identification of baby in High-sugar hamsters. *Research in journal of pharmaceutical and clinical research.* 2012;5(1):134-136.
 11. Chandrabu S, Beirami A and Chidan Kumar CS. Impact of calcium and magnesium ions in identification of baby gender in High-sugar hamsters. *Research in journal of pharmaceutical sciences and research.* 2011;3(12):1619-1624.
 12. Visaria P. The sex ratio of the population of India and Pakistan and regional variations during 61. In: Bose A, editor *Patterns of population change in India* 61. Allied Publishers. 1967;334-71.
 13. Dahl E. Procreative Liberty. The case for Preconception Sex Selection. *Reproductive Bio Medicine.* 2003; 380.
 14. Online: IVF Canada From http://www.ivfcanada.com/service/fees/general_fee_schedule.cfm.
 15. Steinbock. supra note 7 at 24.
 16. Meikle DB and Thornton MW. Premating and gestational effects of maternal nutrition on secondary sex ratio in house mice. *J Reprod Fertil.* 1995;105:193-196.
 17. Stolkowskowsky J and Lorrain J. reconceptual selection of Fetal Sex *int J Gynaecol Obstet.* 1982;18:440-3.